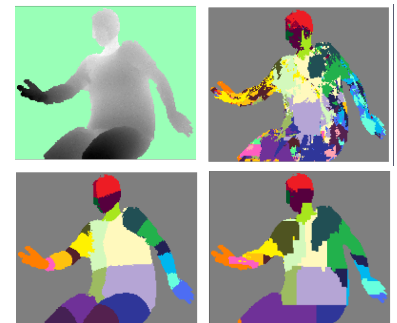
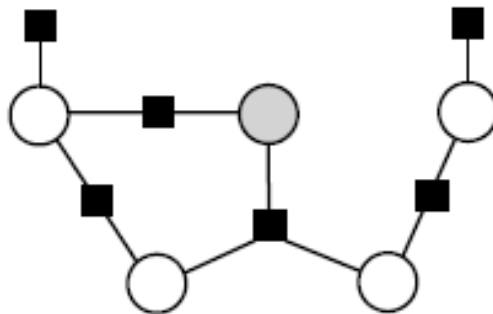




PhD Scholarship in Tübingen Machine Learning/Computer Vision

About the research Most recent advances in computer vision problems such as body pose estimation (Kinect), instance and location recognition (Google Googles), face recognition, etc can be attributed to the use of principled machine learning models and the use of large databases for learning. We are searching for students that are interested in solving high-level computer vision tasks with statistical models. In this project we will focus on probabilistic graphical models. We are interested in efficient learning and inference techniques for rich complex models, with applications such as action recognition, segmentation and scene understanding.

You should be interested in machine learning, ideally you have some knowledge on this topic, and have a mathematical background, e.g. studied computer science, mathematics, physics, etc. You want to work on challenging and fascinating problems in one of the top computer vision and machine learning environments located in the picturesque town of Tübingen in Germany.



About the PhD The three year PhD scholarship is sponsored by Microsoft Research Cambridge (UK) and based at the Max-Planck Institute in Tübingen. This PhD program will enable the student to work on state-of-the-art research in computer vision and machine learning, being co-supervised by a researcher from Microsoft Research. This usually includes visits at Microsoft Research Cambridge as well as an internship in this lab. The problems we work on are relevant to industry in the short and long term.

About the institutes Max Planck Institutes are internationally regarded as the foremost organisation for basic research in Germany. This position is open in the new *Perceiving Systems Department* headed by Prof. Michael Black in the *MPI for Intelligent Systems*. Microsoft Research in Cambridge is an international renown industrial research institute.

To apply for this position please send your application CV, academic records, university transcripts) to Dr. Peter Gehler (pgeher@mpi-inf.mpg.de). In case you have any further question about this position, please do contact us by email.

